

Close coupled Doc M toilet pack with steel exposed fixing grab rails



Product details

Warranty: See individual products

Max load: See individual products

Doc M compliant: Yes

Suitable for wet areas: No

Features

- Complies with Part M of the Building Regulations
- Inlet valve and syphon Reg 4 Certified (WRAS, NSF, Kiwa, etc.)
- Universal – suitable for left or right-handed transfer
- Simple one box solution
- Hygienic rimless pan with robust dedicated seat
- Optional TMV3 valve

Finish options

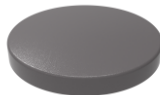
Powder Coated



DB
Dark Blue (RAL 5011)



DG
Dark Grey (RAL 7016)



GY
Grey (RAL 7005)



WH
White (RAL 9016)

Product description

Rimless close coupled Doc M toilet pack, steel, exposed fixings

Rimless close coupled Doc M toilet pack, steel, exposed fixings, TMV3 valve

Product code

F20-CCXX-MSE-**

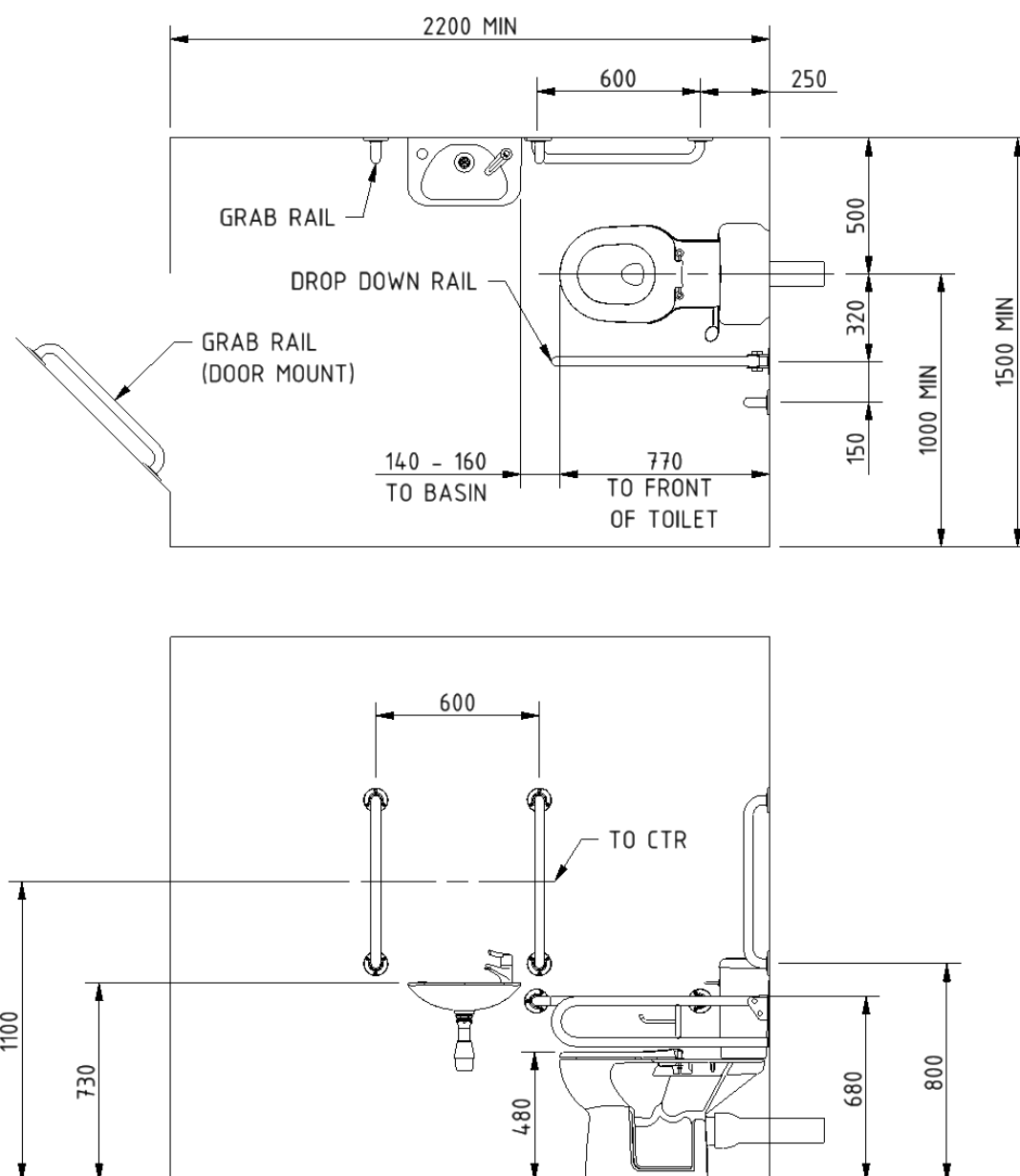
F20-CCTX-MSE-**

Replace ** with 2-character short code for chosen finish (Powder Coated)
e.g., F20-CCXX-MSE-DB

Pack Contents

- 5 x 600mm coated steel grab rails with exposed fixings
- 1 x 800mm coated steel hinged support rail with toilet roll holder
- 1 x Close coupled rimless Doc M projection pan
- 1 x Close coupled cistern with fittings and Doc M spatula lever
- 1 x Ring only toilet seat
- 1 x Compact finger rinse Doc M basin
- 1 x Sequential basin mixer tap
- 1 x Tap hole stopper
- 1 x Basin waste
- 1 x TMV3 Valve (F20-CCTX-MSE-** only)

Dimensions (mm)



Fitzroy of London may occasionally need to change specification of products and/or kit contents and reserves the right to do so. We strive to keep our documentation up to date; however, we cannot guarantee this. We accept no liability for any information given on this data sheet.

Close coupled rimless Doc M pan



Product details

Warranty:	Lifetime
Max load:	400 kg
Doc M compliant:	Yes
Suitable for wet areas:	Yes

Features

- Extended projection to comply with Part M of the Building Regulations
- Rimless design for ease of cleaning
- Comfort height to allow easier side transfer from wheelchair
- UKCA & CE compliant
- Ceramic body

Finish options



WH
White (RAL 9016)

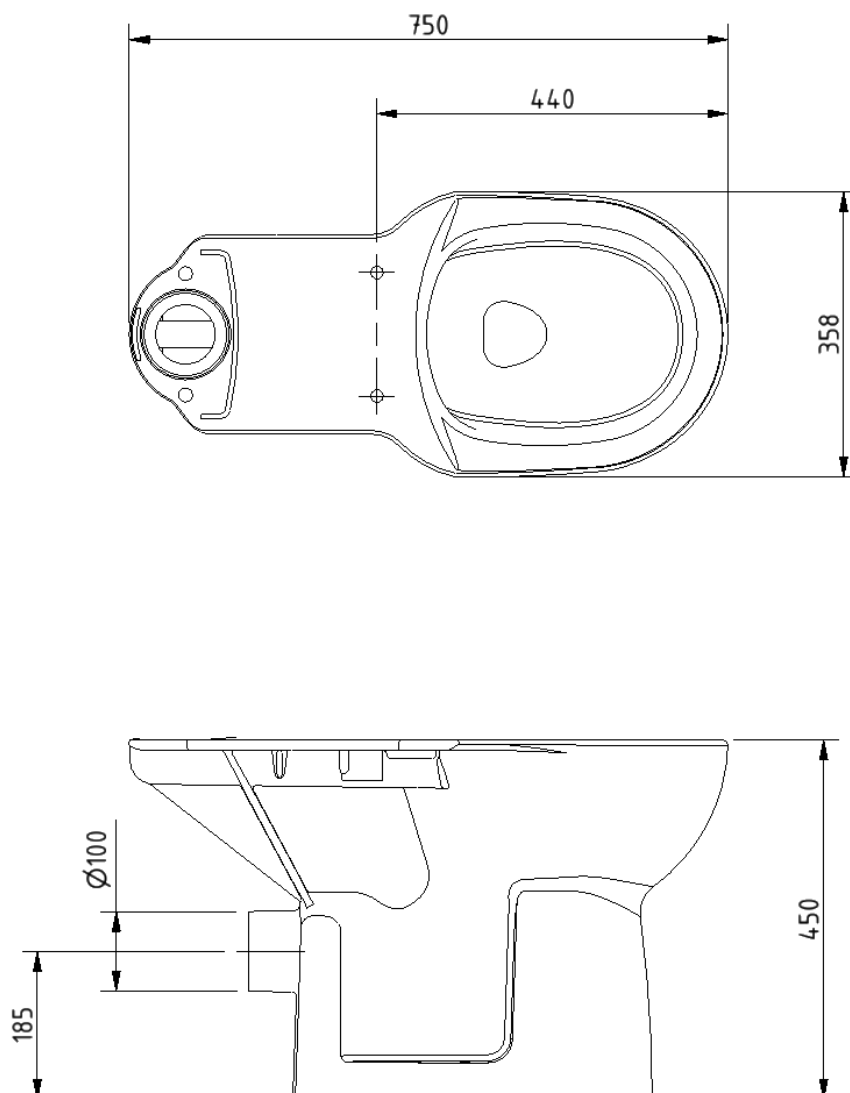
Product description

Close coupled rimless Doc M pan, white

Product code

NY01-PANCC02-WH

Dimensions (mm)



Close coupled minimal cistern tank



Product details

Warranty:	Lifetime
Max load:	N/A
Doc M compliant:	Yes
Suitable for wet areas:	Yes

Features

- Modern minimal design
- Complies with Part M of the Building Regulations
- UKCA & CE compliant
- Suitable for front lever
- Bottom inlet
- Universal - either left or right handed
- Lockable lid option

Finish options



WH
White (RAL 9016)

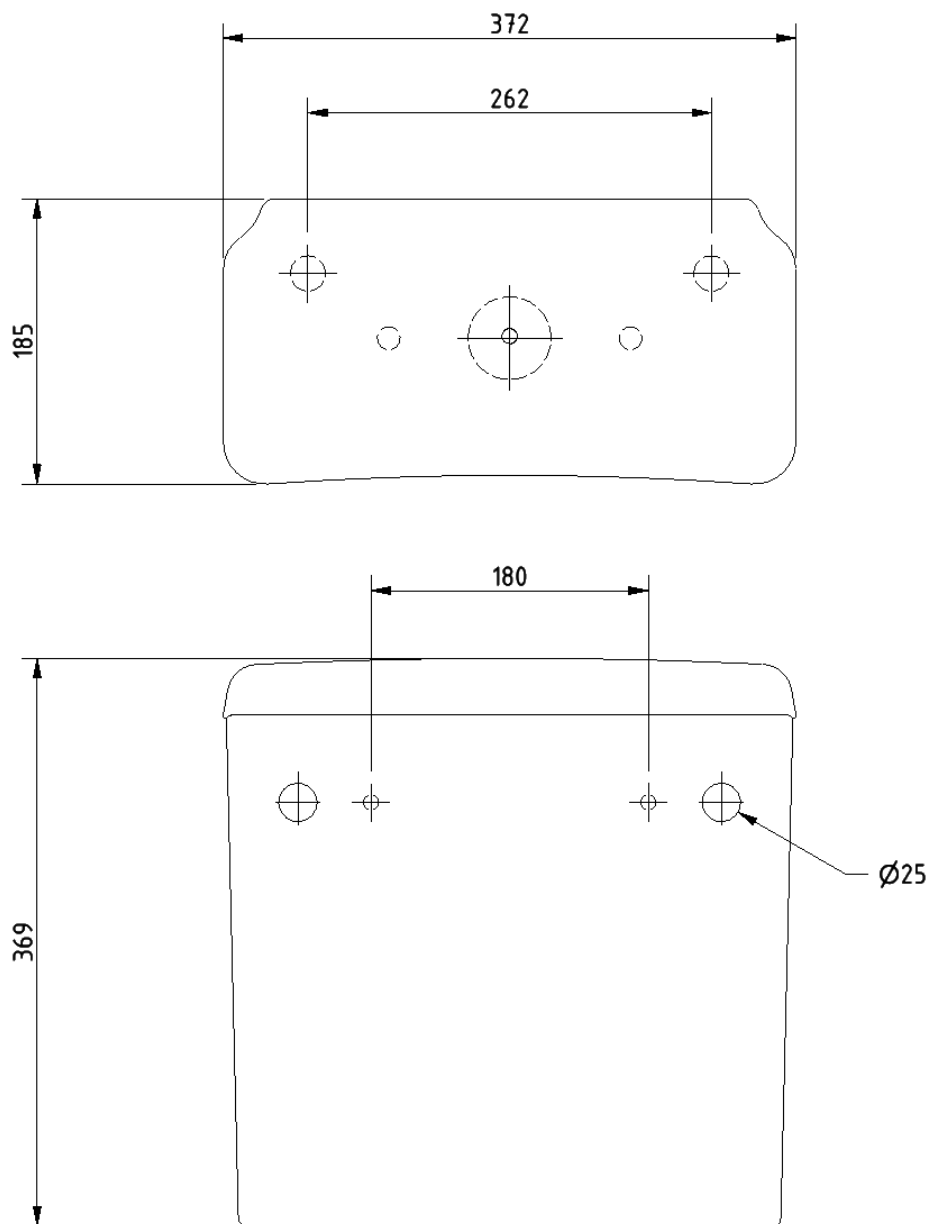
Product description

- Minimal close coupled cistern, white
- Minimal close coupled cistern with lockable lid, white

Product code

- BWCISTCC-SAN
- BWCISTCC/LC-SAN

Dimensions (mm)



Cistern fitting pack for close coupled rimless pan



Product details

Warranty: 2 years

Max load: N/A

Doc M compliant: Yes

Suitable for wet areas: Yes

Features

- Inlet valve and syphon Reg 4 Certified (WRAS, NSF, Kiwa, etc.)
- Can provide both full and half flush
- Doc M spatula lever to provide easy operation for users with limited dexterity
- 6 litre flush

Product description

Product code

Cistern fitting pack for close coupled rimless pan, includes lever and basin waste

SANCCPK-4

Pack contents

- 1 x Inlet valve
- 1 x Syphon
- 1 x Doc M spatula lever
- 2 x Cistern blanking plugs
- 1 x Close coupled fixing bolts
- 1 x Tap hole stopper
- 1 x Basin waste

Need some product advice? Contact our team of product specialists

+44(0)1642 710 719 | sales@fitzroyoflondon.com

www.fitzroyoflondon.com

DAT-SANCCPK-4 Doc Rev 1

Fitzroy of London may occasionally need to change specification of products and/or kit contents and reserves the right to do so.

Ring only toilet seat



Product details

Warranty: 2 years

Max load: N/A

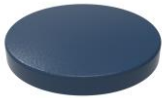
Doc M compliant: Yes

Suitable for wet areas: Yes

Features

- Complies with Part M of the Building Regulations
- Anti-bacterial, strong and durable seat
- Robust stainless steel bar hinge
- Ergonomic and comfortable shape
- Dedicated moulded buffers for best stability
- Fits pan NY01-PANCC02-WH (**Only compatible with this pan**)

Finish options



DB
Dark Blue (RAL 5011)



DG
Dark Grey (RAL 7016)



GY
Grey (RAL 7005)



WH
White (RAL 9016)

Product description

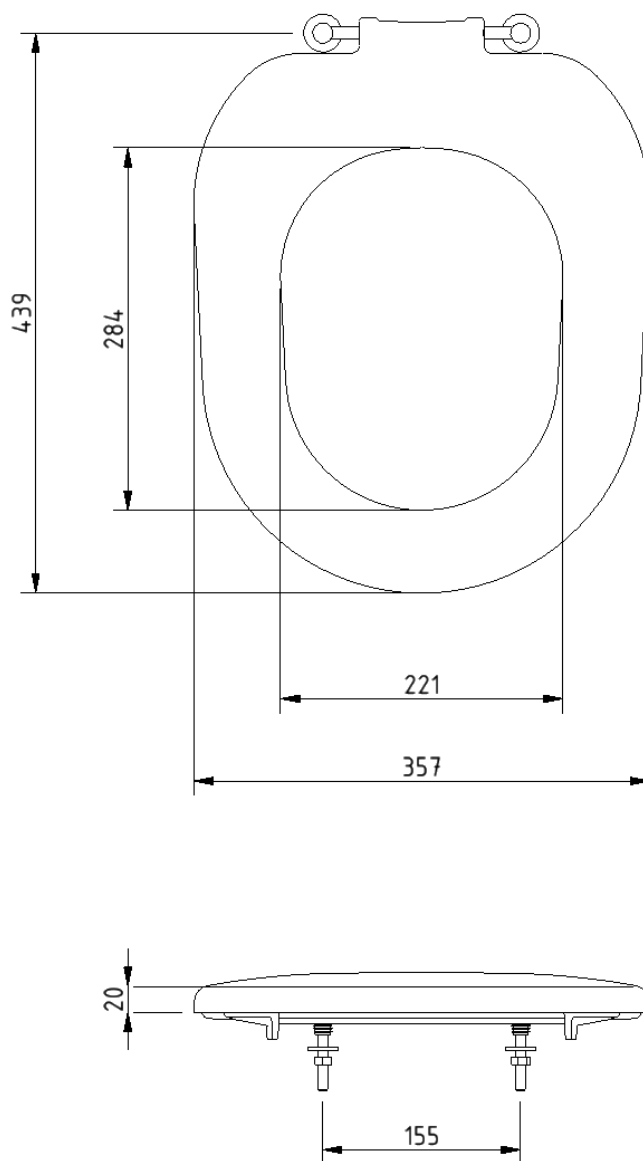
Toilet seat, ring only, stainless steel bar hinge

Product code

NY01-SEAT03-**

Replace ** with 2-character short code for chosen finish.
e.g., NY01-SEAT03-DB

Dimensions (mm)



Compact finger rinse Doc M basin



Product details

Warranty: Lifetime

Max load: N/A

Doc M compliant: Yes

Suitable for wet areas: Yes

Features

- Two tap holes for left or right-handed configuration
- Compact design to maximise space for a wheelchair user
- Complies with Part M of the Building Regulations
- Contemporary design
- No overflow
- CE Marked, compliant sanitary ware
- Wall fixings included

Finish options



WH
White (RAL 9016)

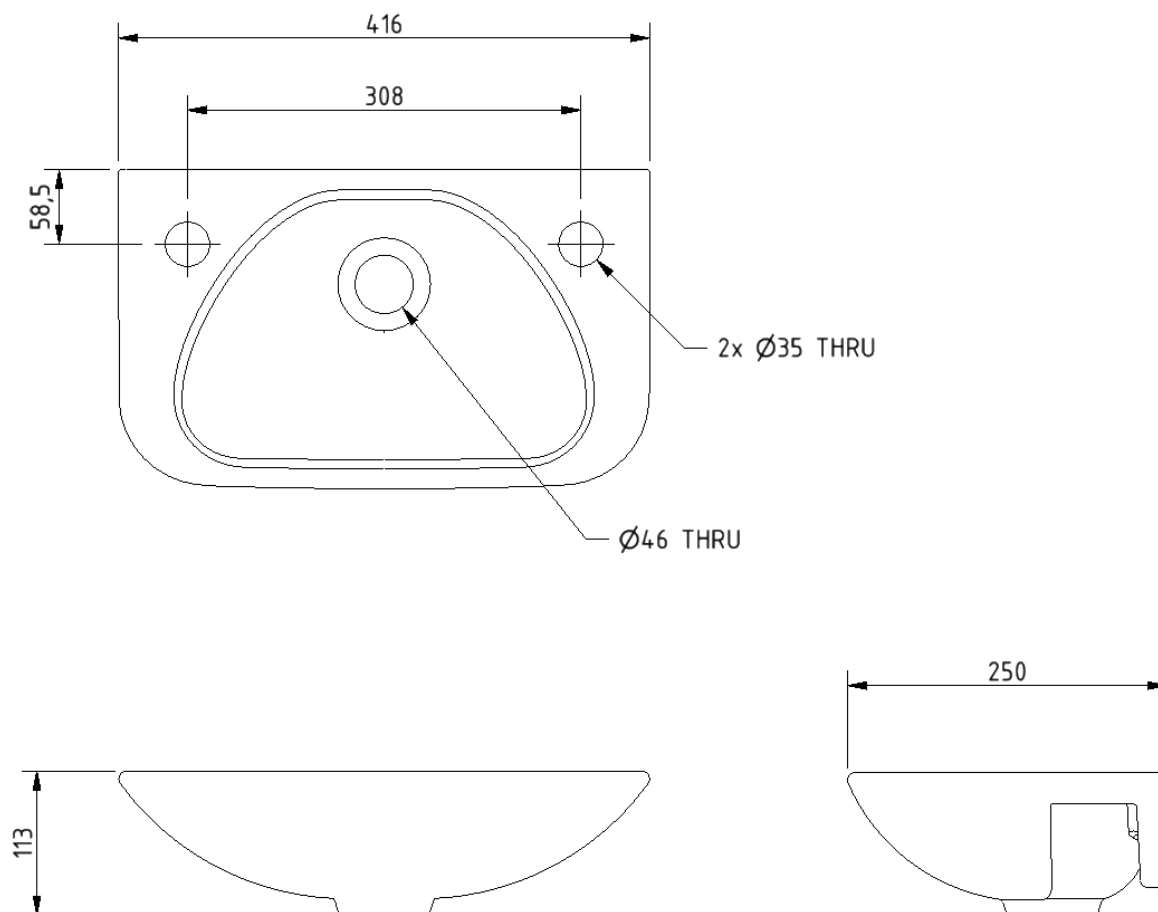
Product description

Compact finger rinse Doc M basin, two tap holes, no overflow, white (RAL 9016)

Product code

F20-BA01-CER-WH

Dimensions (mm)



Polished chrome sequential basin mixer tap



Product details

Warranty:	2 years
Max load:	N/A
Doc M compliant:	Yes
Suitable for wet areas:	Yes
Flexi tap tail connection (to tap body):	M10 thread
Flexi tap tail (onward connection):	½ inch BSP

Features

- Reg 4 certified (WRAS, NSF, Kiwa, etc.)
- Easy operation for users with limited dexterity
- Cold start

Finish options



CP
Polished Chrome

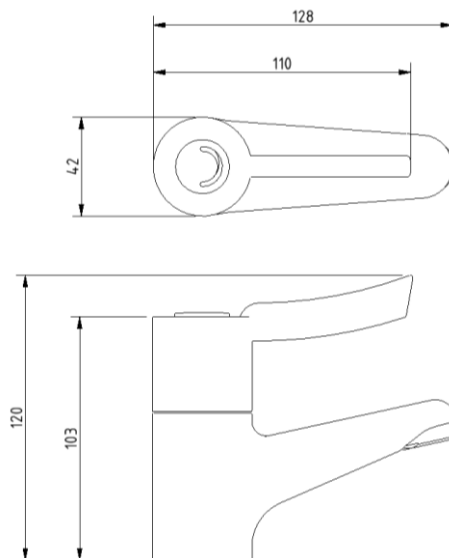
Product description

Sequential basin mixer tap, polished chrome

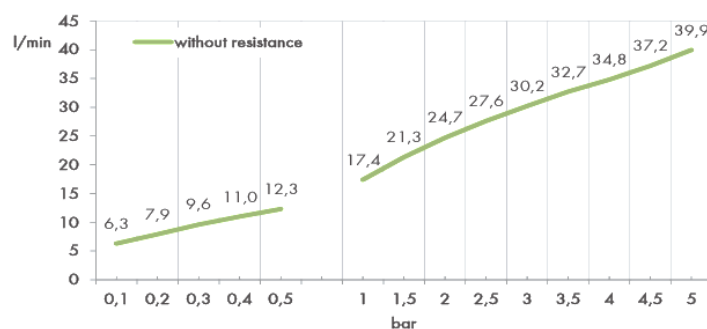
Product code

BPLMON

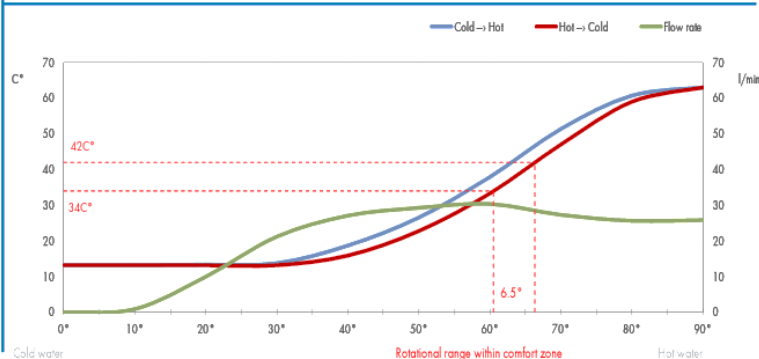
Dimensions (mm)



FLOW RATE CURVE



FLOW RATE & HYSTERESIS CURVES



Round flange steel grab rail with concealed fixings, 35mm diameter tube



Product details

Warranty: 2 years

Max load: 200 kg

Doc M compliant: Yes

Suitable for wet areas: No

Features

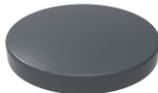
- Complies with Part M of the Building Regulations
- Robust steel construction

Finish options

Powder Coated



DB
Dark Blue (RAL 5011)



DG
Dark Grey (RAL 7016)



GY
Grey (RAL 7005)



WH
White (RAL 9016)

Product description

Product code

Round flange grab rail, steel, exposed fixings, 35mm diameter, 305mm

GR-12/35/**

Round flange grab rail, steel, exposed fixings, 35mm diameter, 455mm

GR-18/35/**

Round flange grab rail, steel, exposed fixings, 35mm diameter, 610mm

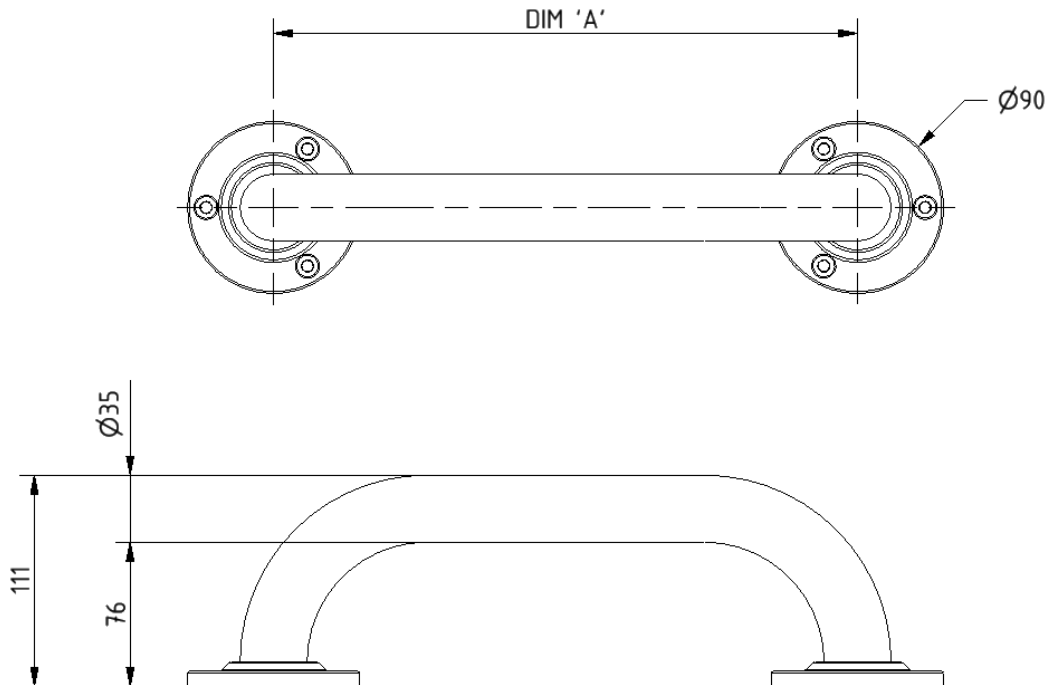
GR-24/35/**

Round flange grab rail, steel, exposed fixings, 35mm diameter, 900mm

GR-36/35/**

Replace ** with 2-character short code for chosen finish (Powder Coated)
e.g., GR-12/35/DB

Dimensions (mm)



PRODUCT CODE	GR-12/35/**	GR-18/35/**	GR-24/35/**	GR-36/35/**
DIM 'A'	305	455	610	900

Lift and lock steel hinged support rail with toilet roll holder



Product details

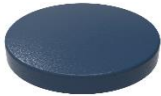
Warranty:	2 years
Max load:	115 kg
Doc M compliant:	Yes (800mm variant only)
Suitable for wet areas:	No

Features

- Lift and lock folding mechanism
- Integral toilet roll holder
- Robust steel construction
- Complies with Part M of the Building Regulations (800mm variant only)

Finish options

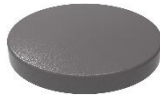
Powder Coated



DB
Dark Blue (RAL 5011)



DG
Dark Grey (RAL 7016)



GY
Grey (RAL 7006)



WH
White (RAL 9016)

Product description

Product code

Trombone lift and lock hinged support rail, steel, toilet roll holder, 550mm

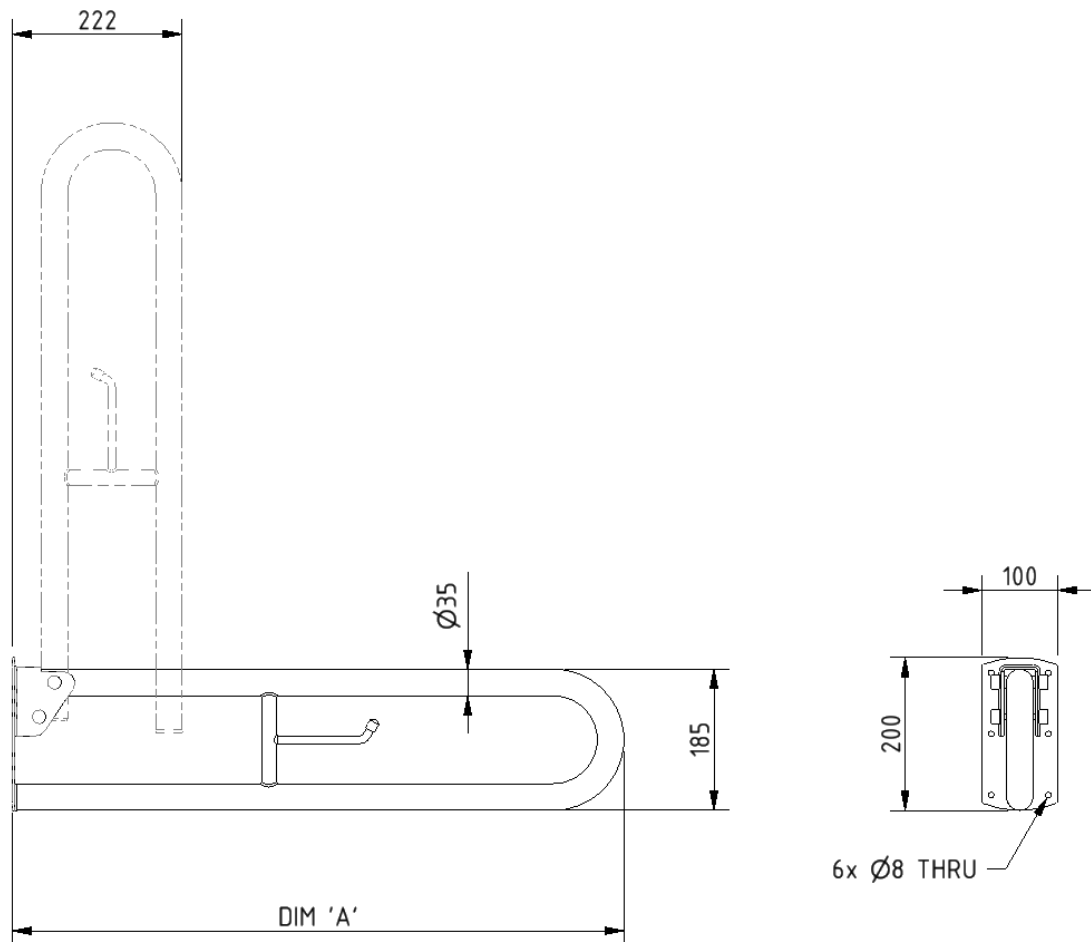
112055/**

Trombone lift and lock hinged support rail, steel, toilet roll holder, 800mm

DDGR-B/**

Replace ** with 2-character short code for chosen finish (Powder Coated).
e.g., DDGR-B/DB

Dimensions (mm)



PRODUCT CODE	112055/**	DDGR-B/**
DIM 'A'	550	800

TMV3 inline thermostatic mixing valve



Product details

Warranty: 2 years

Max load: N/A

Doc M compliant: Yes

Suitable for wet areas: Yes

Features

- TMV3 approved & Reg 4 Certified (WRAS, NSF, Kiwa, etc.)
- Complies with Part M of the Building Regulations
- Building Regulations Part G compliant
- Highly resistant to scaling
- Anti-tamper proof head
- Complies with HTM04-01 D08
- TMV2 approved & complies with BS EN 1111 & BS EN 1287:2017
- Integral check valves & strainers

Finish options



CP
Polished Chrome

Product description

TMV3 inline thermostatic mixing valve - 15mm

Product code

BPLTMV

Dimensions (mm)

